



PREVENTING AND RESPONDING TO HUMAN TRAFFICKING AT MAJOR SPORTING EVENTS PREVENTING RAFFICKING BEFORE AND DURING MAJOR SPORTING EVENTS

**STEPHANIE RICHARD, DIRECTOR, SUNITA
JAIN ANTI-TRAFFICKING INITIATIVE,
LOYOLA LAW SCHOOL**



SUNITA JAIN ANTI-TRAFFICKING INITIATIVE

We are an evidence-based, community-informed think tank that intentionally fills gaps in the prevention of human trafficking through an intersectional framework that fosters systemic change and progressive policy innovations.

We implement and support anti-trafficking strategies through an environmental, immigrant, economic and racial justice lens.



Loyola Law School
Loyola Marymount University
Sunita Jain Anti-Trafficking Initiative



WHY HUMAN TRAFFICKING & MAJOR SPORTING EVENTS?



- Forced Labor Shown to Increase
- No Evidence-Based Data Sex Trafficking Increases

◦ Unintended consequences of educating and focusing on Sex Trafficking creates harm for vulnerable communities

DOCUMENTED ABUSE



2004 ATHENS OLYMPICS

Reports on construction for the 2004 Olympic Games describe worksites staffed largely by migrant workers from Eastern Europe and South Asia. Investigations documented minimal supervision, lack of protective equipment, and poor safety conditions. While the Greek government reported 14 worker fatalities, on-site observers asserted that the actual number was significantly higher—with estimates reaching up to 40 deaths across Olympic-related projects.

2008 BEIJING OLYMPICS

Reports concerning preparations for the 2008 Olympic Games indicate that migrant workers faced exploitative labor conditions, including long hours, unpaid wages, and absence of formal employment contracts. Due to the workers' lack of legal residency status in Beijing and lack of contractual documentation, they reportedly had no meaningful avenues for legal redress for labor violations.



2016 RIO OLYMPICS

According to reports on the 2016 Olympic Games, labor trafficking reached particularly high levels during the construction phase. In one documented case, eleven men were trafficked from other parts of Brazil to work on Olympic venues and the athletes' village. Reports state that the workers were not paid the promised wages and were housed in dilapidated rat-infested buildings, exemplifying severe exploitation during the Games' preparation period.

2020 TOKYO OLYMPICS

A report from the global union federation Building and Wood Workers' International (BWWI) detailed extensive alleged labor rights violations during construction of Tokyo 2020 Olympic facilities. The report found low wages, excessive overtime, and weak grievance mechanisms, contributing to a pervasive "culture of fear." Workers at the Olympic Village reported being required to work 26-28 consecutive days.



2024 PARIS OLYMPICS

Reports and testimonies from undocumented migrant workers involved in building infrastructure for the 2024 Olympic Games reveal significant labor rights violations. French labor

2010 - South Africa

Trade unions noted labor abuses linked to construction projects that required labor strikes to resolve



2014 - Brazil

Trade unions noted labor abuses linked to construction projects that required labor strikes to resolve; eight workers lost their lives building stadiums; government agencies rescued over one-hundred workers from slavery-like conditions during expansion of an airport

2018 - Russia

Exploitation of construction workers included unpaid wages, unsafe working conditions, and lack of employment contracts



2022 - Qatar



PUBLIC HEALTH APPROACH TO COMBATING TRAFFICKING BEFORE & DURING SPORTING EVENTS

Education	Enforce State, County, and City Public Posting and Training Requirements
Procurement	Enforce Existing Procurement Standards with Focus on Sporting Event Contractors
Coordination	Coordinate Response Across Agencies and Local Service Providers to Increase Access to Services for Victims of Trafficking (While Avoiding Unintended Consequences of Law Enforcement Response, Especially from ICE)
Victim Fund	Fund Increased Hotline & Service Needs Through A Specialized Victim Fund
Investment	Fund Long-Term Real Change Through Innovative Investments
Evaluation	Fund Independent Evaluations of Human Rights and Anti-Trafficking Efforts



HUMAN RIGHTS PLANS MUST BE FUNDED



Recommend	Purpose	Cost	FIFA	LA28
#1B: Fund Public	Launch awareness campaign six	\$400,000-\$600,000	\$200,000-\$300,000	\$200,000-\$300,000
#2D: Fund and Publish Independent	Worker-led audits of stadiums,	\$300,000-\$800,000	\$150,000-\$400,000	\$150,000-\$400,000
#3B: Safeguard	Legal monitoring, community	\$300,000	\$150,000	\$150,000
#4A: Fund Increased Access to	Expand hotline capacity, staffing,	\$500,000	\$250,000	\$250,000
#4B: Victim Fund for	Support survivor services	\$1,000,000-\$2,000,000	\$500,000-\$1,000,000	\$500,000-\$1,000,000
#5: Funding Pools for Innovative	Creative outreach, prevention	\$2,000,000	\$1,000,000	\$1,000,000
#6: Fund Independent Evaluations of	Independent research, compliance	\$1,000,000	\$500,000	\$500,000



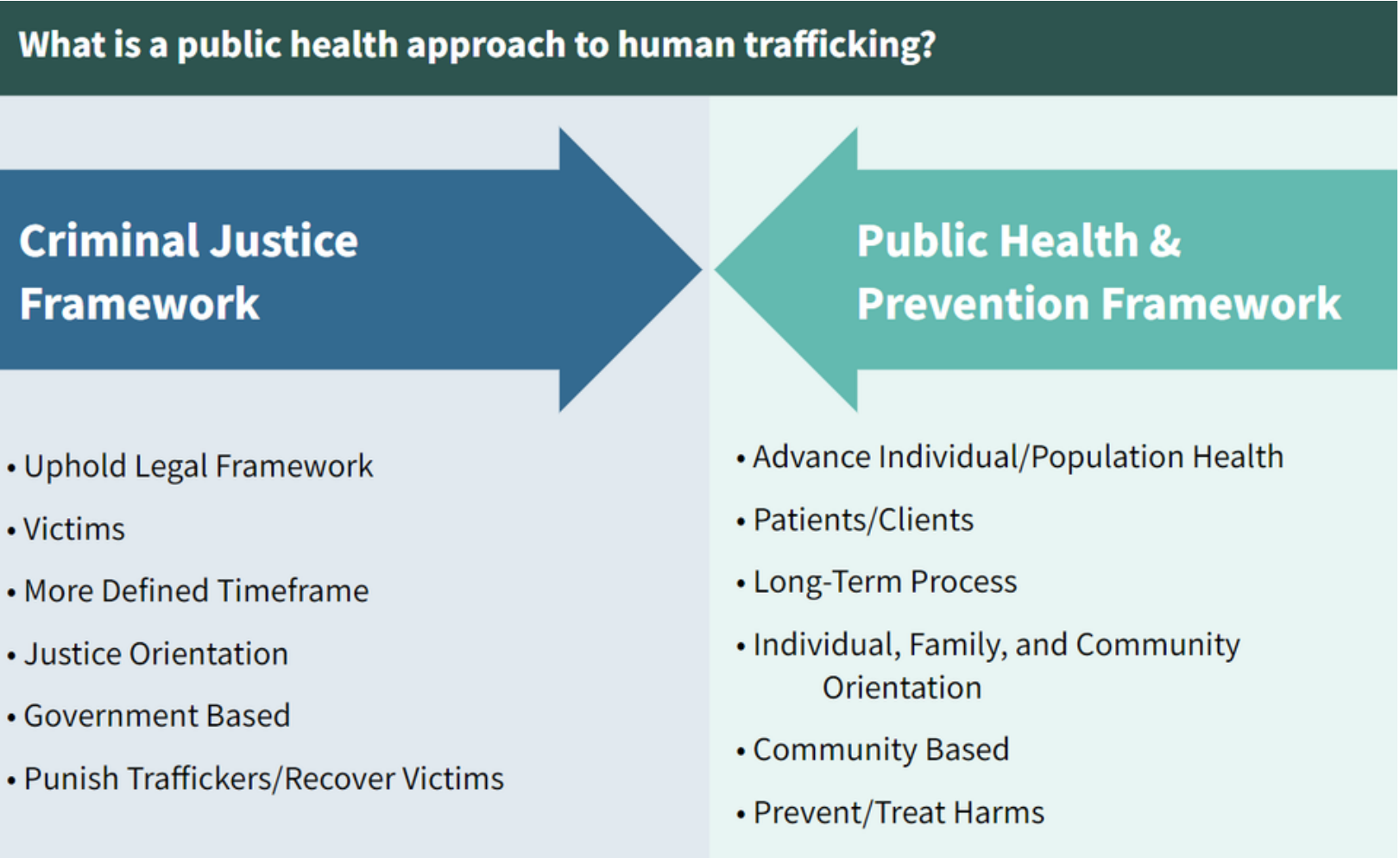
Appendix C
City & County Human Trafficking Action Chart

LA AGENCIES

Recommendation	Action Required	Enforcement Mechanism	Timeline	Enforcement Priorities / Agencies
#1: Enforce Posting Requirements (City of LA)	Ensure 13 categories of businesses (airports, bus stations, hotels, massage parlors, hospitals, etc.) post mandated notices on trafficking	Civil penalties: \$1,000 first offense; \$2,000 subsequent offenses	Immediate reminders; enforcement within 3 months	LA City Bureau of Contract Administration, Office of Wage Standards
#1: Enforce Posting Requirements (LA County)	Ensure 13 additional categories (nursing facilities, salons, gas stations, garment factories, shelters, construction sites, etc.) comply with posting mandates	Administrative fines up to \$1,000/day; civil penalties up to \$2,500/day; misdemeanor prosecution	Immediate reminders; enforcement within 3 months	LA County DCBA, Office of Labor Equity
#1: Enforce State Ticketing Requirement (Cal. Civ. Code § 52.66)	Require ticket vendors for Olympics & World Cup to include trafficking info on electronic tickets; review draft language before distribution	Mandatory compliance under state law; re-send updated tickets if already issued without required language	Immediate notices to vendors	City & County Counsel; Ticketing vendors
#1: Enforce Training Requirements (LA County Code § 13.110.070)	Ensure 25 categories of businesses show DHS 20-minute trafficking awareness video to employees	Administrative fines up to \$1,000/day; civil penalties up to \$2,500/day; misdemeanor prosecution	Notices issued immediately; enforcement within 3 months	LA County DCBA, Office of Labor Equity
#1: Enforce State Training Requirements (SB 970 & AB 2034)	Require hotel/motel employees and transit operators to complete trafficking awareness training	State law mandates compliance; penalties for non-compliance	Ongoing; intensified enforcement 3 months after reminders	State Labor Commissioner; Transit Authorities
#2: Enforce Existing Procurement Standards	Fully leverage procurement power to prevent trafficking in contracts tied to	Enforcement through Sweat-Free Procurement Ordinance, Zero Tolerance policies, and prevailing wage requirements	Begin immediately; ongoing	City Bureau of Contract Administration; County ISD

#2B: Adopt IDS Proposed Updates	Quickly adopt LA County Internal Services Department's drafted ordinances prohibiting trafficking; City should mirror protections	Ordinance pending with County Counsel (2025 report back)	Adoption prior to Olympics & World Cup	County Counsel; City Council
#2C: Enforce Sweat-Free Ordinances	Ensure contractors pay prevailing wages and comply with labor rights obligations under City ordinances	Enforcement by Labor Compliance Program (payroll review, site visits, worker complaint investigations)	Ongoing; intensified enforcement during event preparation	City Bureau of Contract Administration, Office of Wage Standards
#3A: Coordinate Public Health-Focused Response	Mayor's Office convenes monthly inter-agency meetings six months prior to events; prioritize survivor-centered services and harm reduction	Coordination mandate; enforcement through agency participation requirements	Begin 6 months prior to events; monthly meetings	Required agencies: Mayor's Office, LA City Emergency Management, Office of Wage Standards, Public Works, Bureau of Contract Administration, Community Investment for Families, LA County Public Health, DCBA/Office of Labor Equity, Office of Immigration Affairs, County Office of Emergency Management
#3B: Safeguard Immigrant & Worker Rights	Incorporate protections into Human Rights Action Plans and negotiate MOUs with federal agencies	MOUs must include: (1) Protection from Enforcement (no ICE/CBP raids near venues); (2) Non-Discrimination (ban racial profiling, arbitrary detention, restrictions on peaceful protest); (3) Community Involvement (collaboration with unions, immigrant rights groups, NGOs)	Negotiation and adoption prior to Olympics & World Cup	Mayor's Office; County Office of Immigration Affairs; Unions; Immigrant Rights Groups; Federal Agencies (ICE, CBP)

PREVENTING HARM: A PUBLIC HEALTH APPROACH



EXAMPLES: PUBLIC HEALTH APPROACH



PREVALENCE STUDY

- LA would invest in knowing what trafficking looked like in our city & county
- LA would design outreach and service programs based on data



SURVIVOR VOICE & CHOICE

- Services would:
- ensure survivors consulted
- voluntary
- prioritize choice and empowerment
- Support accountability and change



COMMUNITY-BASED OUTREACH MODEL

- Delivered through local, culturally responsive programs/ Peer advocates
- Individually designed for different communities/aspects of trafficking.
- Escape/leaving is on victims own terms.



WHY IT MATTERS

- Aims to prevent traumatization and system-based harm.
- Costs is far less than incarceration and reduces long-term system burden.
- Helps break cycle through early intervention.





PREVENTING HARM

— QUESTIONS:

- Does investing in law enforcement operations and trafficking contribute to prevention and long-term safety for survivors? If so, how?
- How much does a law enforcement operation for human trafficking actually cost, and what are the results?



THANK YOU

FOR MORE INFORMATION, CONTACT:

STEPHANIE.RICHARD@LLS.EDU



Loyola Law School
Loyola Marymount University
Sunita Jain Anti-Trafficking Initiative

